

Predicting increasing high severity area burned for three forested regions in the western United States using extreme value theory.

Alisa R. Keyser<sup>a1</sup>

<sup>a</sup>Sierra Nevada Research Institute  
University of California Merced  
Merced, CA 95343 USA

*Corresponding author:* [akeyser@unm.edu](mailto:akeyser@unm.edu)

<sup>1</sup>Present Address

Department of Biology  
MSC03-2020  
University of New Mexico  
Albuquerque, NM 87131 USA

A. LeRoy Westerling<sup>b</sup>

<sup>b</sup>Professor of Management of Complex Systems  
Ernest and Julio Gallo Management Program  
University of California Merced  
Merced, CA 95343 USA

Abstract

More than 70 years of fire suppression by federal land management agencies has interrupted fire regimes in much of the western United States. The result of missed fire cycles is a buildup of both surface and canopy fuels in many forest ecosystems, increasing the risk of severe fire. The frequency and size of fires has increased in recent decades, as has the area burned with high severity in some ecosystems. A number of studies have examined controls on high severity fire occurrence, but none have yet determined what controls the extent of high severity fire. We developed statistical models predicting high severity area burned for the western United States and three sub-regions—the Northern Rocky Mountains, Sierra Nevada Mountains, and Southwest. A simple model with maximum temperature the month of fire, annual normalized moisture deficit and location explains area burned in high severity fire in our west-wide model, with the exception of years with especially large areas burned with high severity fire: 1988, 2002. With respect to mitigation or management of high severity fire, understanding what drives extreme fire years is critical. For the sub-regional models, topography, spring temperature and snow-pack condition, and vegetation condition class variables improved our prediction of high severity burned area in extreme fire years. Fire year climate is critical to predicting area burned in high severity fire, especially in extreme fire years. If a goal of management is to mitigate extreme fire events in terms of fire severity, then knowledge of fire year climate and its effect on fire severity is essential. The models developed here are ideal for scenario analyses and impact assessments—e.g. to understand the impact of fuels management and/or climate change on potential high severity area burned.

## 1. Introduction

More than 70 years of fire suppression by federal land management agencies has interrupted fire regimes in parts of the western United States (US). Many forest types that historically burned frequently have undergone significant changes in species composition and have heavy accumulations of surface and canopy fuels, putting them at risk for

severe fires (Agee et al. 1978, Agee and Skinner 2005, McKelvey et al. 1996, Keane et al. 2002). In testimony to the Natural Disasters Roundtable, Cleaves testified that of ~168 million hectares of fire adapted ecosystems in the coterminous US, more than 29 million are considered to be a high risk to human and ecosystem values due to an accumulation of fuels and risk of high severity fire, and more than 57 million are considered a moderate risk (2001). A high severity fire is exemplified by a stand replacing fire where most surface and crown fuels are burned and most over-story vegetation is killed.

Both the frequency and size of large wildfires have increased in the past 30 years in the western US (Dennison et al. 2014, Littell et al. 2009, Miller et al. 2009, Stephens and Ruth 2005, Westerling et al. 2006, Westerling 2016) as has the length of the fire season (Westerling et al. 2006, Jolly et al. 2015, Westerling, 2016). Climate affects area burned through both production of biomass and fuels, enhanced after wet winters and springs, and the drying of fuels, enhanced by drought. Many studies predict continued increases in large fire occurrence with climate change in western US forests (Spracklen et al. 2009, Littell et al. 2010, National Research Council 2011, Westerling et al. 2011a,b, Kitzberger et al. 2017). Recent work estimates at least half of observed trends in forest wildfire may be due to climate change (Abatzoglou and Williams, 2016).

Area burned in high severity fire has been correlated to total area burned in some regions, and has seen a concomitant increase with increasing fire size (Cansler and McKenzie 2014, Dillon et al. 2011, Miller et al. 2009, Miller and Safford 2012, Abatzoglou et al. 2017). In the North Cascade Range, Cansler and McKenzie found that both total high severity area and patch size increased with total burned area (2014). Bottom-up controls, such as topography and vegetation, appeared to mediate this fire area-burn severity area relationship in some ecosystems with historical low-moderate severity fire regimes (Cansler and McKenzie 2014).

In the Sierra Nevada, CA/NV, Miller et al. found that fire size (annual mean and maximum) and total area burned increased in the period 1984-2006, and are now above pre-suppression levels (2009). They also found that the proportion of high severity, stand-replacing fires increased (Miller et al. 2009). The proportional increase in high severity fires was not uniform, but was concentrated in low to mid-elevation forest types where 25-40% of total burned area was classed as high severity. High severity fires are not characteristic of these forest types, indicating that the current fire regime in these ecosystems is outside of historical natural conditions (Agee et al. 1978, Agee 1998, Collins et al. 2009, Moody et al. 2006, Parsons and DeBenedetti 1979).

Previous work (Keyser and Westerling 2017) indicates that fire year climate is critical to accurately predicting severe fire occurrence, especially for very large fires. While many studies have now sought to explain what controls the occurrence of high severity fire at the individual fire to regional scales, few have looked at what controls the scale at which high severity fire occurs. Abatzoglou et al. (2017) found weak to moderate correlations between metrics of fuel aridity and regional burn severity. The ability to predict the amount of area that is at risk of burning in high severity fire and whether this is changing would improve the implementation of management decisions to mitigate fires with severi-

ty that is uncharacteristic in size or for the ecosystem in which it occurs. In this paper, we seek to answer the following questions:

Given that a large fire (> 400 hectares) occurs,

1. What is the probability that > 200 hectares will burn in high severity?
2. What are the total hectares burned in high severity?
3. What variables determine area burned in high severity?

## 2. Methods

### *2.1 Spatial and Temporal Domain of Analysis*

As with the presence/absence modeling in Keyser and Westerling, our modeling domain is a 12km x 12km latitude/longitude grid (2017). We developed models for eleven contiguous Western US states as a whole and three smaller regions to determine if we could improve model performance in years with very large high severity area burned in: the Sierra Nevada Mountains (SN), the Northern Rocky Mountains (NR), and mountains in Arizona and New Mexico (hereafter Southwest, SW) (Figure 1). The data used vary in spatial resolution from 30m to 12km; to maintain information content of the higher resolution data, we aggregated it to the 12km modeling grid by calculating fractional area of each variable.

The temporal domain of analysis is determined by the availability of burn severity data, which is produced with Landsat imagery. Our models are built on data from 1984-2006, the latest year of completed burn severity mapping when we started our project. We have since obtained data from 2007-2014; trends in fire severity metrics are calculated for 1984-2014. Both our hydroclimate predictor variables and dates within the burn severity database are monthly. We modeled the monthly probability of high severity fire area over 200 hectares and total high severity burned area in the Western US and summed to annual values from 1984-2006. The ignition date of the fire is provided with the burn severity data, but there is no data on length of fire activity; we used the ignition month to link our hydroclimate predictor variables. Our predictors represent the month that the fire started, but may not represent the exact conditions when high severity fire occurred as many large fires burn for more than one month. Any climatic variability that might drive fire behavior, and thus severity, in a fire burning outside the month of discovery will not be captured in our data.

## *2.2 Burn Severity Data*

We downloaded fire severity data from the Monitoring Trends in Burn Severity (MTBS) project website and used the classified fire severity images to build our models (Eidenshink et al. 2007, <http://www.mtbs.gov>). The classified images threshold the continuous differenced normalized burn ratio into five severity classes: unburned to low severity, low severity, moderate severity, high severity, increased greenness. For this analysis we selected only forest fires, defined as a fire in which at least 10% of the total burned area was in forest vegetation, following USFS classification standards (Brohman and Bryant 2005). We used data included with the MTBS data that intersects fire severity pixels with Ecological Systems classifications, based on the National Landcover Data Classification

(<http://www.mtbs.gov/ProjectDocsAndPowerpoints/projectplan.html>; 29 January 2016, Homer et al. 2007). We calculated the fractional fire area, for all classes, in the following broad classifications: barren, developed, forest, herbaceous natural, herbaceous planted, shrubland, water, wetlands. We dropped 41 fires from our classified burn severity data that did not have a matching record in the ancillary vegetation/severity database. Of a total 4591 fire records in the MTBS burn severity and vegetation database file, we retained 1871 fires that were a minimum of 400 hectares, had forest cover  $\geq 10\%$  and had matching records in the classified severity and severity by vegetation database files. We intersected the burn severity images with the 12km grid; if a fire intersected more than one modeling pixel, we assigned it to the pixel containing the majority of the fire area.

We set the presence of high severity fire hectares  $> 200$  as the threshold for this analysis. Of the 1871 forest fires, 815 exceeded the 200 hectare high severity threshold. The 200 hectare threshold was selected for the generalized Pareto distribution models for area exceeding that threshold using graphical analysis to fall within the range where the sample mean excess function is a linear function of the threshold value (see Coles 2001; Holmes et al. 2008).

### *2.3 Landscape Data*

Topographic variables derived from the GTOPO30 global 30 Arc Second (1km) Elevation Data Set data were aggregated to our 12km modeling resolution. These were accessed online from the North American Land Data Assimilation System (LDAS) (<http://ldas.gsfc.nasa.gov>, Mitchell et al. 2004). The variables include minimum, maximum, mean and standard deviation of elevation within each modeling pixel. Mean slope and aspect are also included. The standard deviation of elevation reflects the topographic complexity within each modeling pixel. We also created a two dimensional surface spline of latitude

and longitude to use as a smoothed spatial dummy variable for site-specific characteristics (as in Preisler and Westerling 2007).

We aggregated fire regime condition class (FRCC) data from the LANDFIRE project (accessed online at <http://www.landfire.gov>) as the fractional coverage of each class within the 12km modeling pixels; we then normalized the FRCC fractions using the log function. Fire regime condition class is a widely used metric to identify the impact of land management decisions on ecosystems. It quantifies differences in current vegetation composition from the range of variability under historical natural fire regimes; the departure value is a continuous value 0-100 (Hann 2004, Lavery and Williams 2000). The historical range of variability is determined using the LANDSUM disturbance and succession model run with historic fire regimes (Keane et al. 2006, Pratt et al. 2006). The LANDFIRE departure metric refers only to vegetation composition and does not incorporate changes in fire regime. The departure values are categorized into three FRCC classes: FRCC1 is within historical range (departure <33%); FRCC2 is moderately departed (33% ≥ departure < 66%); FRCC3 is highly departed, or outside the historical range of variability (departure ≥ 67%) (Holsinger et al. 2006, Keane et al. 2007). We are using the FRCC as a proxy variable to reflect the effects of fire suppression.

#### *2.4 Climate and Hydrologic Data*

We obtained a suite of hydroclimate predictor variables output from the Variable Infiltration Capacity model (VIC) and the gridded climate data used to force it (Liang et al. 1994). The VIC model calculates surface and energy water balances and is designed for large-scale applications; it has a simplified soil-vegetation-atmosphere-transfer scheme with a two-layer soil module. A unique feature of VIC is its ability to account for sub-grid scale variability in vegetation characteristics; it calculates evapotranspiration from the



vegetation and evaporation from bare soil surfaces at a daily time step for each vegetation class in the modeling grid cell and returns a weighted area sum. Our VIC data was produced with gridded daily climate at ~12km (Mauer et al. 2002) and a 1km vegetation layer from the North American Land Data Assimilation System produced by the University of Maryland (<http://ldas.gsfc.nasa.gov>, Mitchell et al. 2004). The vegetation layer is composed of coarse plant functional types, e.g. Evergreen needle leaf forest, deciduous broadleaf forest.

The VIC output is returned as monthly averages from 1915-present and includes: temperature extrema and average (Tmax, Tmin, Tave), precipitation (PPT), relative humidity (Rh), snow water equivalent (SWQ), evapotranspiration (ET), moisture deficit (MD), and antecedent moisture deficit derivatives, e.g. 0-12 month prior (Westerling et al. 2009). We calculated 30-year means and standard deviations for 1961-1990 for Tave, PPT, cumulative MD, and ET. Month of fire and cumulative annual MD variables were normalized relative to the 1961-1990 average and standard deviation.

## *2.5 Logistic Regression Modeling*

We defined the presence of high severity fire for this analysis as 200 hectares (as above). We used the Random Forest package in R to predict both the fraction of high severity fire (high severity hectares divided by total fire hectares) and high severity burned area (hectares classified as high severity) (Liaw and Wiener 2002, R Core Team 2015). We used the top 10-20 predictors from Random Forest as an initial predictor set to perform logistic regression analysis on presence of high severity fire >200 hectares. The model building and evaluation was iterative starting with a core set of variables and

removing insignificant variables and evaluating changes in the AIC until we achieved the most parsimonious model with the best explanatory power.

To model the probability of high severity fire presence, we use the logged odds, or logit:

$$\text{Logit } P_{200} = \ln(P_{200} / (1 - P_{200})) = \beta \times [1 + X_j]$$

Where  $P_{200}$  is the probability of a fire having >200 hectares classified as high severity; note that implicit in this is that a fire of at least 400 hectares burned. The Logit  $P_{200}$  is the logarithm of the odds ratio  $P_{200} / (1 - P_{200})$ ;  $\beta$  is a vector of maximum likelihood estimated parameters from the data;  $X_j$  is the set of independent predictor variables best fit to the model. The threshold of 200 hectares to determine presence was chosen as it is the threshold chosen for the generalized Pareto distribution model; to predict area burned over our threshold of 200 hectares, we need first to know the probability that this many hectares would burn.

We use the Aikake Information Criterion (AIC) to evaluate model performance (Aikake, 1974, 1981).

$$\text{AIC} = -2(\ln(\text{likelihood})) + 2N$$

where *likelihood* is the probability of the data given a model and N is the number of parameters in the model (predictors and intercept). The best model is a model that balances model fit to the data with number of parameters. The AIC penalizes models for excess predictive parameters. The AICs are evaluated as the difference between individual model AIC and the minimum AIC from all models. There is no test to compare AICs, but a general rule of thumb is that if  $\Delta\text{AIC} < 2$ , the models are not significantly different in their skill;  $\Delta\text{AIC} > 10$  is a significant difference in model skill (Burnham and An-

derson 2004, Haire and McGarigal 2010). Once we chose the model with the lowest AIC vs. number of parameters, we performed a leave one out cross-validation.

## *2.6 Generalized Pareto Distribution Modeling*

We estimated generalized Pareto distributions (GPD) for fire severity area burned with a threshold value of 200 hectares and used these to model the log of area burned in high severity fire. The GPD is a points over threshold model. The choice of threshold was made by evaluating a mean residual life (or sample mean excess function) plot. A threshold was chosen above which the mean residual life plot was linear, meaning that the GPD is providing a valid approximation of the distribution (Coles, 2001). The GPD can be estimated with and without covariates. Generally, if the data vary spatially or temporally, the inclusion of covariates is necessary to obtain a good model fit (Coles, 2001). We estimated GPDs with and without covariates using the *ismev* function in **R**, initializing with the same set of predictors used in the logistic regression model. Model specifications were evaluated with the AIC (Aikake, 1974, 1981).

## *2.7 West-wide Modeling*

In our first stage of model estimation, we used all forest fires in the western US. Our success in creating models of high severity fire occurrence across the western US led us to first estimate GPDs for the entire region (Keyser and Westerling 2017). These models performed well, with the exception of years with extremely large areas burned in high severity fire: 1988, 2002. The utility of our models lies in the ability to understand the conditions that lead to exceptional years in terms of high severity area burned. The years where our model performed poorly are years that saw regional differences in extreme fire activity, indicating that there are unique regional-scale controls on high severi-

ty fire area burned across western US forests in these years. We hypothesize that these are related to vegetation-mediated differences in the climate sensitivity of regional fire regimes that are not fully captured by the covariates we used. Previous work indicated that high severity fire occurrence requires more extreme climate conditions in regions where high severity fire occurrence is highly variable, such as California and the Southwest, than in areas dominated by cool moist forests with high severity fire regimes (Keyser and Westerling 2017). We chose the Northern Rocky Mountains, Sierra Nevada Mountains, and Southwest forest areas to generate regional GPD models of high severity area burned in an attempt to improve model performance in extreme years.

## *2.8 Regional Modeling*

The Northern Rocky Mountain region experienced very large high severity area burned in the years 1988 and 2000; forests of the Southwest experienced the same in 2002, while 1987 and 2002 were high in the Sierra Nevada. We defined the Northern Rocky Mountains as area in Montana, Idaho, and Wyoming bound by latitudes (41.1875,48.9375) and longitudes (-108.675, -104.1875). We defined the Sierra Nevada Mountains using latitude (37.0,40.5) and longitude (-122, -117.5) within California. For the Southwest, we took all forest fires in Arizona and New Mexico (Figure 1).

## 3. Results

### *3.1 Trends in high severity burned area*

High severity burned area is positively correlated to total burned area in the WUS and in individual states; the fraction of high severity burned area has weak to no correlation to total burned area (Table 1, Figure 2). We looked for 1984-2014 trends in both high

severity burned area and in the number of fires with >200 hectares high severity for the western US as a whole, for individual states, for our three modeling regions, and for months in the fire season. There is no trend in total annual high severity hectares burned from 1984-2014 (Table 2). There was, though, a corresponding trend in the number of fires with high severity hectares > 200.

Both the WUS and Wyoming experienced significant trends in the annual number of fires with high severity hectares > 200 from 1984-2014 ( $p < 0.05$ , Figures 3 and 4, Table 2). This increase is occurring during the summer fire season in June, July, and August, all with significant increases in the number of high severity fires (Figure 5).

For the three regions we modeled, there were not significant trends in high severity burned area or number of high severity fires. The Sierra Nevada did have a significant increase in the annual minimum fraction of high severity burned area; this means that there are now fewer years without any severe fire (Figure 5).

### *3.2 West-wide Models*

#### *3.2.1 Logistic regression of high severity occurrence >200 hectares*

There are 815 forest fires that meet the threshold of 200 hectares burned in high severity. A combination of vegetation condition class, location, temperature and moisture deficit variables best explain presence of high severity fire over our threshold (Table 4). The final model fits the observations well, Figure 7 ( $r = 0.95$ ,  $p\text{-value} < 0.001$ ), and has the form:

$$\text{Logit}(P_{200}) = \beta \times [1 + \text{Tavg.mu} + \text{Tavg.sd} + \text{Tmax} +$$

$$\text{MD10} + \text{MD00n} + \text{FRCC3} + X(\text{Lat}, \text{Lon})]$$

where  $T_{\text{avg.mu}}$  and  $T_{\text{avg.sd}}$  are the 1961-1990 mean and standard deviation, respectively of annual average temperature;  $T_{\text{max}}$  is maximum temperature the month of fire occurrence, MD10 is July moisture deficit of the year of fire, MD00n is normalized cumulative annual moisture deficit in the year of fire; FRCC3 is fractional area in fire regime condition class 3; and  $X()$  is a matrix describing a west-wide two-dimensional basis spline. The surface spline of latitude and longitude was important for predicting occurrence of high severity fire for all west-wide and regional models.

### *3.2.2 Generalized Pareto distribution modeling*

The addition of covariates to the stationary generalized Pareto distribution (GPD) model significantly improved model fit (Figure 8a). A fairly simple model with maximum temperature the month of fire, cumulative annual moisture deficit and location explains area burned in high severity fire in most years (Table 4).

Our west-wide model performs well with the exception of years with especially large areas burned with high severity fire: 1988, 2002. In the Northern Rocky Mountains, 1988 experienced large and severe fire in the greater Yellowstone region; forests of the Southwest and Sierra Nevada experienced large and severe burns in 2002. In these years, our model greatly under-predicts the area burned in high severity fire; regional GPD models identified location specific covariates that best explained total area burned in high severity fire in these extreme years.

### *3.3 Regional Models*

### *3.3.1 Logistic regression of high severity occurrence > 200 hectares*

Regional models all performed well with highly significant correlations between predicted and observed high severity fire occurrence (Figure 9). The primary difference in regional versus west-wide occurrence modeling is the importance of topographic and climate variables in the final regional models (Table 4). In the Northern Rocky Mountains (NRM), minimum and mean elevation in the modeling pixel were important ( $r = 0.94$ ,  $p\text{-value} < 0.001$ ); maximum elevation was important for the Southwest (SW,  $r = 0.84$ ,  $p\text{-value} < 0.001$ ), and average slope was important in the Sierra Nevada (SN,  $r = 0.79$ ,  $p\text{-value} < 0.001$ ). The NRM was the only region for which vegetation condition class (FRCC) was not important in the best-fit occurrence models.

### *3.3.2 Generalized Pareto distribution modeling*

Our regional models explained extreme years with large areas burned in high severity, each with unique covariates. For the NRM, the following covariates were important: minimum and mean elevation, average spring temperature, 1961-1990 average temperature, maximum temperature in the month of fire occurrence, relative humidity, March snow water equivalent, and cumulative annual moisture deficit. When these variables are included, we achieve much better predictions of area burned for 1988 and 2000, the years with largest areas burned in high severity fire in this region (Figure 8b, Table 4).

For Southwest forests, 2002 was an extreme year with respect to area burned in high severity fire (224023 hectares vs. a 24 year mean of 19577 hectares; the next highest value is 46380 hectares). Our regional model slightly under-predicts 2002, but the value falls within the range of 1000 random draws from the GPD (Figure 8c, Table 4). Maxi-

mum elevation, average spring temperature, relative humidity, and moisture deficit in the month of fire occurrence were significant covariates for area burned in high severity.

The best GPD model for the Sierra Nevada Mountains included climate, topographic, and vegetation condition covariates (Figure 8d, Table 4). The variability in long term moisture deficit and average temperature, slope, and fraction in FRCC1 were included. Annual climate variables of maximum temperature the month of fire, annual average spring temperature, April snow water equivalent, and cumulative water year moisture deficit were also included. The years 1987 and 2002 account for most of the area burned in high severity. We were not able to fit a model that captured both years well. In 1987, two weeks of dry lightning storms at the end of summer resulted in a record number of fire starts and all of the high severity fires in our data started in the first three days of this period ([http://www.fire.ca.gov/downloads/redbooks//1987\\_BW.pdf](http://www.fire.ca.gov/downloads/redbooks//1987_BW.pdf)). In 2002, almost all of the hectares burned in high severity (37642 of 47064 total hectares) in our dataset are from one fire, the McNally fire, that started as a result of an illegal campfire. Without the McNally fire, 2002 would not have been a remarkable year in terms of high severity hectares burned, and we were not able to fit any model that matched this year well, though our model does fit well to the other two fires that burned in 2002 (results not shown).

## 4. Discussion

### *4.1 Trends in high severity burned area*

Our finding that high severity burned area is positively correlated to total burned area is in agreement with other smaller scale studies (Cansler and McKenzie, 2014, Dillon et al. 2011). While larger fires are associated with more hectares burned in high severity, this



does not necessarily mean that larger fires are more severe as there is not a corresponding association with the proportion of total fire area burned in high severity. The increases in large fire occurrence and area burned that have been observed and are predicted with a changing climate will likely result in increases in total high severity fire area in the future (Littell et al. 2009, Stephens 2005, Westerling et al. 2006, 2009, Westerling 2016).

Our record of high severity fire is likely too short to record a significant trend in high severity burned hectares. Without a longer record of severity, we can't with certainty say whether the amount of severity has increased significantly. For many ecosystems in the WUS, enough fire cycles may have been missed due to fire suppression by the time our fire severity record began to impact fuel availability and severity, while others would not have missed any. Our only sub-setting of fires was by relatively large sub-regions that include many forest types and historical fire regimes. It is possible that individual forest types (i.e. those with short fire return intervals) may have experienced an increase in high severity area burned, as recorded in California and Southwest forests, but these increases are not evident when all forest fires are examined together (Dillon et al. 2011, Miller and Safford 2012). While we did not find a significant trend in total high severity hectares, there was a significant west-wide trend in number of fires that meet our high severity threshold.

The significant trend in the number of fires meeting our severity threshold indicates that there is an overall increase in the number of large severe fires since 1984. This is likely a result of the aforementioned correlation between area burned and high severity area burned and the observed increases in number of large fires in recent decades (Dennison et al. 2014, Littell et al. 2009, Westerling et al. 2006, Westerling 2016). While there is evidence for an increase in the length of the fire season in the western US (Jolly et al.

2015, Westerling et al. 2006, Westerling 2016), our increases in high severity fire occurrence occur in the middle of the fire season, June-August, indicating that the increases are likely due to changes in burning conditions or fuels rather than in the lengthening of the fire season (Figure 5).

#### *4.2 Models of high severity burned area*

Our west-wide models for both presence of high severity fire and log area burned in high severity fire have three classes of explanatory variables—biophysical setting, climate, and vegetation condition class. The spline of latitude and longitude used here is substituting for the spline of MD/ET that we used in previous work (Keyser and Westerling 2017). The MD/ET spline is a proxy for biological site conditions suitable for plant growth (Stephenson 1998). We substituted the latitude and longitude spline as we would like these models to be readily usable with GCM model output; it also performed better than the MD/ET spline. The importance of the normalized fraction of FRCC in our model indicates that historical management of fire, primarily as fire suppression, has affected the probability that high severity fire will occur in the presence of a large fire. Last, the maximum temperature and normalized moisture deficit in the month of fire occurrence are important, especially for predicting area burned in high severity fire. The importance of within-year climate variables for predicting high severity fire area in these models is supported by the results from Keyser and Westerling (2017); when we removed within year variables, our ability to predict fires with a high fraction of high severity burned area was limited.

While the west-wide model did well in most years, and the predictor variables are supported by our previous research, the relatively simple model did not explain years with very large high severity burned area. With respect to mitigation or management of high

severity fire, understanding what drives extreme fire years is critical. Many variables that were important west-wide were also important in the regional models; in addition to the spline variable, topographic position variables were important biophysical setting predictors in the regional models.

Topographic position is an important determinant of the overall energy balance of a site, impacting vegetation distribution and productivity and, concomitantly, fuel availability. High elevation sites, especially those with north aspects, support cool moist forests that typically burn infrequently, but with high severity. In contrast, low elevation sites with south aspects will support drier open forests that burn more frequently. The importance of topographic parameters in our regional models is supported by smaller scale studies. Elevation was important in the Southwest and Northern Rocky Mountain regions in both logistic regression and GPD models. Previous regional studies from these areas also found topographic variables to be important. Dillon et al. created predictive models for the Northern Rocky Mountains and Southwest and found that topographic position was a dominant predictor of fire severity occurrence and was more important than climate variables (2011). Birch et al. also looked at fire severity in Idaho and Montana (NRM) and found that topography and existing vegetation were more important than climate in predicting burn severity (2015). Both of these studies used finer scale and more complex topographic variables nearer the scale of the burn severity data, which could explain the difference in importance. Including climate variables improved the Dillon et al. models, especially in the Southwest (2011).

Fire year climate variables were more important in predicting area burned in high severity fire (GPD models) than in occurrence of high severity over a threshold. The Northern Rocky Mountains and Sierra Nevada Mountains had more complex models than the Southwest. This is likely because these two regions support a broader range of ecosys-

tems and historic fire regimes. Models for both regions include seasonal and month of fire climate variables. Average spring temperature was important in all regions. Warmer springs lead to earlier snowmelt and can lead to an earlier start of the fire season, especially in dry years. Snow water equivalent in the spring was also important for the NR and SN; snowmelt provides the majority of growing season moisture available for plant growth in these regions. Years with earlier snowmelt and/or less snowpack will impact fuel quantity and flammability. Less available growing season moisture will result in lower production of fine fuel biomass and increased flammability due to fuel drying. In addition to temperature and moisture conditions antecedent to the fire season, the maximum temperature and relative humidity in the month of fire (NR only) were important for predicting area burned in high severity fire. The combination of less seasonal moisture availability and hot, dry conditions at the time of ignition further increases flammability and risk for severe fire.

For the Southwest, area burned in high severity is best explained with average spring temperature and month of fire relative humidity and normalized moisture deficit. Holden et al. found that fire season precipitation patterns influence fire severity in the Gila Wilderness, NM (2007). The climate of this region is monsoonal, with much of the precipitation occurring during the growing season. Southwest climate is also strongly impacted by the El Niño Southern Oscillation (ENSO); large fire years correspond to high phase ENSO (La Niña) and spring drought conditions. The climate conditions that produce large fires are also important for creating conditions conducive to severe fires via increasing the flammability of vegetation and fuels.

We expected that fire regime condition class would be an important predictor of high severity fire. While it was important in the west-wide logistic regression model, it wasn't consistently important in the GPD or regional models. In forested ecosystems, FRCC

indicates how departed the current vegetation is from what would be expected under a historical fire regime. Areas in the highly departed condition class 3 should burn in higher severity given a buildup in fuels and changes in species composition due to fire suppression. The fraction of FRCC3 was important only in the Southwest forests, for both logistic regression and GPD models. The historic fire regime in many Southwest forests was one of frequent low severity fires; the importance of FRCC3 in these models is likely capturing the impact of suppression (Covington et al. 1997, Swetnam and Baisan 1996). In the Sierra Nevada, FRCC1 was important for both models, but FRCC3 was not important. Substituting FRCC3 and FRCC2+3 into our SNC model resulted in decreased model performance as evaluated with AIC and the variable was not significant.

The Sierra Nevada forests are dominated historically by a mixed severity fire regime. Studies have shown an increase in fire severity in some mixed conifer forests (fuel limited fire regimes) over the period of record studied here; they did not find the same in climate limited fire regimes (Miller and Safford 2012, Steel et al. 2015). Fire severity increased in areas that experienced increased time since fire due to fire suppression, as we would expect, in the fuel limited forests in the Sierra Nevada. Collins et al. also found that time since fire was important in predicting fire severity in the Sierra (2007, 2009). With quantitative evidence that fire frequency is important in controlling severity in fuel limited ecosystems, we would expect that FRCC would be a significant predictor as a proxy for fuel buildup due to fire suppression. Perhaps the distribution of FRCC classes in this region is such that FRCC1 better captures fire severity here. A limitation to our use of FRCC is that our modeling pixels are very large and we have calculated the fraction of each severity class in these to maintain as much information as possible. However, the FRCC fractions don't necessarily reflect the exact FRCC fraction within any given fire perimeter. Instead, they are an indication of fuel conditions proximate to the ignition site of a fire.

#### *4.3 Climate Change and High Severity Burned Area*

Climate change will create warmer conditions over the western US, while precipitation changes will be more variable. The Southwest is projected to be both warmer and drier, with increasing drought severity (Cayan et al. 2013). The Sierra Nevada will be very sensitive to changes in the timing of snowmelt due to warming temperatures, regardless of precipitation changes, and is projected to be drier overall (Cayan et al. 2013). The Northern Rockies are likely to be warmer and drier (Westerling et al. 2011a). The importance of annual moisture deficit, monthly maximum temperature, spring temperature and snow water equivalent in our regional models of high severity area burned indicate that there could be more extreme fire years in the future. The combination of our predictors being more likely and the increase in large fires will likely be and increase in extreme fire years in terms of size and severity.

The length of the fire season (Westerling et al. 2006, Jolly et al. 2015, Westerling, 2016) and large fire occurrence have increased over the past three decades (Dennison et al. 2014, Littell et al. 2009, Miller et al. 2009, Stephens and Ruth 2005, Westerling et al. 2006, Westerling 2016). Our models are conditional on large fires burning, and many studies predict continued increases in area burned or large fire occurrence with climate change in the western US (Westerling and Bryant 2008, Spracklen et al. 2009, Littell et al. 2010, National Research Council 2011, Westerling et al. 2011a,b, Kitzberger et al. 2017).

#### *4.4 Implications for Forest Management*

Forest management plans need to incorporate climate change, and models like ours are well suited to impact assessment and scenario analysis. The combination of climate and

vegetation variables in our model allows us to examine the separate and interactive effects of climate and fuels management scenarios. Most of the variables that were important in the best-fit models are readily available, meaning that we can simulate how high severity occurrence and extent might respond to a changing climate. Given projected future changes of the climate variables in our model (warmer and drier on average), it is likely that high severity area burned will increase unless fuel availability and structure become a constraint (Cayan et al. 2013, Kitzberger et al. 2017, Westerling et al. 2011a). The spatial distribution of changes in high severity area will be variable and dependent on whether the historical fire regime was more fuel- (Sierra Nevada mixed conifer forests) or climate-limited (Northern Rocky Mountain cool moist forests). Our models can be used to inform managers when and where these increases are most probable, and what the near-term magnitude of change is likely to be.

While climate affects both fuel availability and flammability, past forest management has also affected fuel availability in many western forest ecosystems. For regions where fire regime condition class was an important predictor of high severity area burned, we can explore fuels management scenarios with our models to evaluate their potential for mitigating high severity area burned. In addition, the experimental work presented here could be extended to incorporate other data characterizing fuels conditions where these are available. Krofcheck et al. used the probability of high severity fire to derive fuels treatment scenarios in a spatial, process modeling framework to evaluate the effects of targeted fuels management on Sierra Nevada forest carbon sequestration and resilience (2018). Similarly, we have looked at the potential for fuels treatments to mitigate high severity area burned, and resulting impacts to spotted owl (*Strix occidentalis*) habitat, in the Sierra Nevada in a changing climate (Keyser, et al. 2017). Westerling (2018 in review) applies this modeling methodology to explore the effects of scenarios for the impact of recent drought-related mortality in Sierra Nevada forests on high severity fire

over the next couple of decades. Modeling and scenario analysis studies like these can improve our understanding of how changing climate and fuels might interact to affect area burned in high severity across a landscape and allow managers to target expensive fuel treatments to address multiple objectives, while accounting for a changing climate.

## 5. Conclusions

Based on this and our previous work (Keyser and Westerling 2017), we conclude that fire year climate is critical to predicting area burned in high severity fire, especially in extreme fire years. The importance of climate versus vegetation type varies considerably across western US forests, with climate playing a greater role in mixed severity fire regimes such as mid-elevation Sierra Nevada forests. Accurately predicting high severity area burned in extreme fire years requires developing regional models that reflect varying fire-climate-vegetation dynamics across different forest types.

We were deliberate in building our models with predictor variables that are readily available to facilitate their utility to both researchers and managers. With a very low computational cost, we can estimate the probability and area of high severity fire for multiple western US landscapes. Models like these are ideal for scenario analyses, such as: developing adaptive management strategies (e.g. Keyser *et al.* 2017, Krofcheck *et al.* 2018), for resource planning, and climate impact assessment (e.g. Westerling, Bryant, *et al.* 2009, 2011b).

## 6. Acknowledgements

Funding: This work was supported by The University of California; USDA Forest Service [grant number 14-CS-11052006-025]; NOAA [grant number NA110AR4310150].



We thank Dr. Jessica Blois, Dr. Dan Cayan, Dr. Elliott Campbell, and Dr. Lara Kueppers for thoughtful review and comments that improved the manuscript. We thank anonymous reviewers for comments that improved the clarity of the manuscript.

## 7. References

- Abatzoglou, J.T. and A.P. Williams. 2016. Impact of anthropogenic climate change on wildfire across western US forests. *Proceedings of the National Academy of Sciences*, 113(42):11770-11775.
- Abatzoglou, J.T., C.A. Kolden, A.P. Williams, J.A. Lutz and A.M. Smith. 2017. Climatic influences on interannual variability in regional burn severity across western US forests. *International Journal of Wildland Fire*, 26(4):269-275.
- Agee, J.K., R.H. Wakimoto, and H.H. Biswell. 1978. Fire and fuel dynamics of Sierra Nevada conifers. *For. Ecol. and Manage.* 1:255-265.
- Agee, J.K. 1998. The landscape ecology of western forest fires regimes. *Northwest Science*. 72:24-34.
- Agee, J.K. and C.N. Skinner. 2005. Basic principles of forest fuel reduction treatments. *For. Ecol. and Manage.* 211:83-96.
- Akaike, H. 1974. A new look at the statistical model identification. *IEEE Trans Automatic Control*. 19(6): 716-723.
- Akaike, H. 1981. Likelihood of a model and information criteria. *J Econ* 16(1):3-14.
- Birch D.S., P. Morgan, C.A. Kolden, J.T. Abatzoglou, G.K. Dillon, A.T. Hudak, and A.M.S. Smith. 2015. Both topography and climate affected forest and woodland burn severity in two regions of the western US, 1984 to 2006. *Ecosphere* 6(1):17.
- Brohman, R., L. Bryant. Eds. 2005. Existing Vegetation Classification and Mapping Technical Guide. Gen. Tech. Report WO-67. Washington, D.C., U.S. Department of Agriculture Forest Service, Ecosystem Management Coordination Staff. 305pp.
- Burnham, K.P. and D.R. Anderson. 2004. Multimodel Inference. *Sociological Methods & Research*. 33(2):261-304.
- Cansler A.C. and D. McKenzie. 2014. Climate, fire size, and biophysical setting control fire severity and spatial pattern in the northern cascade range, USA. *Ecol. App.* 24(5):1037.
- Cayan, D., M. Tyree, K.E. Kunkel, C. Castro, A. Gershunov, J. Barsugli, A.J. Ray, J. Overpeck, M. Anderson, J. Russell, B. Rajagopalan, I. Rangwala, and P. Duffy. 2013. Future climate: projected average. In *Assessment of climate change in the Southwest United States: A report prepared for the National Climate Assessment*, edited by G. Garfin, A. Jardine, R. Merideth, M. Black, and S. LeRoy. pp.

101-125. A report by the Southwest Climate Alliance. Washington, DC: Island Press.

- Cleaves, D. 2001. Fires in the wildland urban interface: Dilemmas of duality and the role of national science leadership. Presented to: Natural Disasters Roundtable. Washington, D.C. 14pp.
- Coles, S. 2001 An introduction to statistical modeling of extreme values. Springer London.
- Collins, B.M., M. Kelly, J.W. van Wagtendonk, S.L. Stephens. 2007. Spatial patterns of large natural fires in Sierra Nevada wilderness areas. *Landscape Ecol.* 22:545-557.
- Collins, B.M., J.D. Miller, A.E. Thode, M. Kelly, J.W. van Wagtendonk, and S.L. Stephens. 2009. Interactions among wildland fires in a long-established Sierra Nevada Natural Fire Area. *Ecosystems.* 12:114-128.
- Covington, W.W., P.Z. Fule, M.M. Moore, S.C. Hart, T.E. Kolb, J.N. Mast, S.S. Sackett, and M.R. Wagner. 1997. Restoring Ecosystem Health in Ponderosa Pine Forests of the Southwest. *J. of Forestry.* 95(4):23-29.
- Dennison P.E., S.C. Brewer, J.D. Arnold, M.A. Moritz. 2014. Large wildfire trends in the western United States, 1984-2011. *Geophys Res Lett* 41(8):2928-33.
- Dillon G.K., Z.A. Holden, P. Morgan, M.A. Crimmins, E.K. Heyerdahl, and C.H. Luce. 2011. Both topography and climate affected forest and woodland burn severity in two regions of the western US, 1984 to 2006. *Ecosphere* 2(12):130.
- Eidenshink J., B. Schwind, K. Brewer, Z. Zhu, B. Quayle, S. Howard. 2007. A project for monitoring trends in burn severity. *Fire Ecology* 3(1):3-21.
- Haire, S.L. and K. McGarigal. 2010. Effects of landscape patterns of fire severity on regenerating ponderosa pine forests (*Pinus ponderosa*) in New Mexico and Arizona, USA. *Landscape Ecol.* 25:1055-1069.
- Hann, W.J., 2004. Mapping fire regime condition class: a method for watershed and project scale analysis. In: Engstrom, R.T., Galley, K.E.M., De Groot, W.J. (Eds.), Proceedings of the 22<sup>nd</sup> Tall Timbers Fire Ecology Conference, Fire in Temperate, Boreal and Montane Ecosystems. Tall Timbers Research Station, pp. 22–44.
- Holden, Z.A., P. Morgan, M.A. Crimmins, R.K. Steinhorst, and A.M.S. Smith. 2007. Fire season precipitation variability influences fire extent and severity in a large southwestern wilderness area, United States. *Geophysical Res. Lett.* 34. L16708.
- Holmes, T.P., R.J. Huggett Jr., and A.L. Westerling. 2008. Statistical analysis of large wildfires. In "The Economics of Forest Disturbances: Wildfires, Storms, and Invasive Species". ed. by T.P. Holmes et al. Springer. pp 59-77.
- Holsinger, L., R.E. Keane, B. Steele, M.C. Reeves, and S. Pratt. 2006. Using historical simulations of vegetation to assess departure of current vegetation conditions across large landscapes. In Rollins, M.G., C.K. Frame. Tech eds. 2006. The

LANDFIRE Prototype Project: nationally consistent and locally relevant geospatial data for wildland fire management. Gen. Tech. Rep. RMRS-GTR-175. Fort Collins: U.S. Department of Agriculture, Forest Service, Rocky Mountain Research Station.

- Homer, C., J. Dewitz, J. Fry, M. Coan, N. Hossain, C. Larson, N. Herold, A. McKerrow, J.N. VanDriel, and J. Wickham. 2007. Completion of the 2001 National Land Cover Database for the Conterminous United States. *Photogrammetric Eng. and Remote Sens.* 73(4):347-341.
- Jolly W.M., M.A. Cochrane, P.H. Freeborn, Z.A. Holden, T.J. Brown, G.J. Williamson, and D.M.J.S. Bowman. 2015. Climate-induced variations in global wildfire danger from 1979 to 2013. *Nature Comm.* 6.
- Keane, R.E., K.C. Ryan, T.T. Veblen, et al. 2002. Cascading effects of fire exclusion in Rocky Mountain Ecosystems: A literature review. *Gen. Tech. Report.* RMRS-GTR-91. Fort Collins, CO: U.S. Dept. of Agr. Forest Service, Rocky Mountain Research Station. 24pp.
- Keane, R.E., L.M. Holsinger, and S.D. Pratt. 2006. Simulating historical landscape dynamics using the landscape fire succession model LANDSUM version 4.0. Gen. Tech. Rep. RMRS-GTR-171CD. Fort Collins, CO: U.S. Department of Agriculture, Forest Service, Rocky Mountain Research Station. 73 p.
- Keane, R.E., M. Rollins, and Z. Zhu. 2007. Using simulated historical time series to prioritize fuel treatments on landscapes across the United States: The LANDFIRE prototype project. *Ecol. Modelling.* 204:485-502.
- Keyser, A. and A.L. Westerling. 2017. Climate drives inter-annual variability in probability of high severity fire occurrence in the western United States. *Environmental Research Letters.* 12:065003.
- Keyser, A., A.L. Westerling, G. Jones, M.Z. Peery. 2017. Simulating high spatial resolution high severity burned area in Sierra Nevada forests for California spotted owl habitat climate change risk assessment and management. Poster at *American Geophysical Union, Fall Meeting 2017.* New Orleans, LA.
- Kitzberger, T., D.A. Falk, A.L. Westerling, T.W. Swetnam. 2017. Direct and indirect climate controls predict heterogeneous early-mid 21<sup>st</sup> century wildfire burned area across western and boreal North America. *PLOS ONE.* 12(12): e0188486.
- Krofcheck, D.J., M.D. Hurteau, R.M. Scheller, E.L. Loudermilk. 2018. Prioritizing forest fuels treatments based on the probability of high-severity fire restores adaptive capacity in Sierran forests. *Glob. Change. Bio.* 24:729-737.
- Laverty, L. and J. Williams. 2000. Protecting people and sustaining resources in fire-adapted ecosystems—a cohesive strategy. Forest Service Response to GAO Report GAO/RCED, 99-65. USDA Forest Service, Washington, D.C.
- Liang, X., D.P. Lettenmaier, E.F. Wood, and S.J. Burges. 1994. A simple hydrologically based model of land surface water and energy fluxes for general circulation models. *J. of Geophys. Res.* 99(D7): 14,415-14,428.

- Liaw, A. and M. Wiener. 2002. Classification and regression by randomForest. *R News*. 2(3):18-22.
- Littell, J. S., D. McKenzie, D.L. Peterson, and A.L. Westerling. 2009. Climate and wildfire area burned in western U.S. ecoprovinces, 1916–2003. *Ecol. App.* 19: 1003–1021.
- Littell, J.S., E.E. Oneil, D. McKenzie, J.A. Hicke, J.A. Lutz, R.A. Norheim, and M.M. Elsner. 2010. Forest ecosystems, disturbance, and climatic change in Washington State, USA. *Climatic Change*. 102(1):129-158.
- Maurer, E., A. Wood, J. Adam, D. Lettenmaier, and B. Nijssen. 2002. A long-term hydrologically based dataset of land surface fluxes and states for the conterminous United States. *J. of Climate*. 15:3237–3251.
- McKelvey, K.S., C.N. Skinner, C. Chang, D.C. Et-man, et al. 1996. An overview of fire in the Sierra Nevada. *In* Sierra Nevada Ecosystem Project: Final Report to Congress, Vol II, Assessments and scientific basis for management options. Davis: University of California, Centers for Water and Wildland Resources.
- Miller, J.D., H.D. Safford, M. Crimmins, A.E. Thode. 2009. Quantitative evidence for increasing forest fire severity in the Sierra Nevada and Southern Cascade Mountains, California and Nevada, USA. *Ecosystems*. 12:16-32.
- Miller, J.D., and H. Safford. 2012. Trends in wildfire severity: 1984 to 2010 in the Sierra Nevada, Modoc Plateau, and southern Cascades, California, USA. *Fire Ecology* 8(3):41-57.
- Mitchell K.E., D. Lohmann, P.R. Houser, E.F. Wood, J.C. Schaake, et al. 2004. The multi-institution North American Land Data Assimilation System (NLDAS): Utilizing multiple GCIP products and partners in a continental distributed hydrological modeling system. *J Geophys Res* 109:D07S90.
- Moody, T.J., J. Fites-Kaufman, S.L. Stephens. 2006. Fire history and climate influences from forests in the northern Sierra Nevada, USA. *Fire Ecology*. 2(1):115-142.
- MTBS Data Access: Fire Level Geospatial Data. (2009, November - last revised). MTBS Project (USDA Forest Service/U.S. Geological Survey). Available online: <http://mtbs.gov/dataquery/individualfiredata.html> [2009, December 12].
- National Research Council 2011. Climate stabilization targets: Emissions, Concentrations, and Impacts over Decades to Millennia. Washington, D.C.: The National Academies Press: 286 p.
- Parsons, D.J. and S.H. DeBenedetti. 1979. Impact of fire suppression on a mixed-conifer forest. *For. Ecol. and Manage.* 2:21-33.
- Pratt, S., L. Holsinger, and R.E. Keane. 2006. Using simulation modeling to assess historical reference conditions for vegetation and fire regimes for the LANDFIRE Prototype Project. *In* Rollins, M.G., C.K. Frame. Tech eds. 2006. The LANDFIRE Prototype Project: nationally consistent and locally relevant geospatial data for

wildland fire management. Gen. Tech. Rep. RMRS-GTR-175. Fort Collins: U.S. Department of Agriculture, Forest Service, Rocky Mountain Research Station.

- Preisler, H.K. and A.L. Westerling. 2007. Statistical model for forecasting monthly large wildfire events in Western United States. *J. of App. Meteo. and Clim.* 46:1020-1030.
- R Core Team. 2015. R: A language and environment for statistical computing. R Foundation for Statistical Computing, Vienna, Austria. URL <http://www.R-project.org/>.
- Spracklen, D.V., L.J. Mickley, J.A. Logan, R.C. Hudman, R. Yevich, M.D. Flannigan, and A.L. Westerling. 2009. Impacts of climate change from 2000 to 2050 on wildfire activity and carbonaceous aerosol concentrations in the western United States. *Journal of Geophysical Research: Atmospheres*, 114(D20).
- Steel, Z. L., H. D. Safford, and J. H. Viers. 2015. The fire frequency-severity relationship and the legacy of fire suppression in California forests. *Ecosphere* 6(1):8.
- Stephens, S.L. 2005 Forest fire causes and extent on United States Forest Service lands. *Int. J. of Wildland Fire*. 14:213-222.
- Stephens, S.L. and L.W. Ruth. 2005. Federal forest-fire policy in the United States. *Ecological Applications*. 15(2):532-542.
- Stephenson, N. 1998. Actual evapotranspiration and deficit: biologically meaningful correlates of vegetation distribution across spatial scales. *J. of Biogeography*, 25: 855–870.
- Swetnam, T. and C. Baisan. 1996. Historical fire regime patterns in the southwestern United States since AD 1700. In: CD Allen (ed) Fire Effects in Southwestern Forests: Proceedings of the 2nd La Mesa Fire Symposium, pp. 11-32. USDA Forest Service, Rocky Mountain Research Station, General Technical Report RM-GTR-286.
- Westerling, A.L., H.G. Hidalgo, D.R. Cayan, and T.W. Swetnam. 2006. Warming and earlier spring increase western U.S. forest wildfire activity. *Science*. 313:940-943.
- Westerling, A. L. and B. P. Bryant. 2008. Climate change and wildfire in California. *Climatic Change*, 87:s231-249.
- Westerling, A.L., B.P. Bryant, H.K. Preisler, H.G. Hidalgo, et al. 2009. Climate change, growth, and California wildfire. A Paper From: California Climate Change Center. CEC-500-2009-046-D. 28pp.
- Westerling, A.L., M.G. Turner, E.H. Smithwick, W.H. Romme, and M.G. Ryan. 2011a. Continued warming could transform Greater Yellowstone fire regimes by mid-21st Century. *Proc. of the Nat. Acad. of Sciences*. 108(32):13165-13170.
- Westerling, A.L., B.P. Bryant, H.K. Preisler, T.P. Holmes, H. Hidalgo, T. Das, and S. Shrestha. 2011b. Climate Change and Growth Scenarios for California Wildfire. *Climatic Change*, 109(s1):445-46

Westerling A.L. 2016: Increasing western US forest wildfire activity: sensitivity to changes in the timing of spring. *Phil. Trans. R. Soc. B.* 371: 20150178.

Tables

Table 1. Pearson's correlation coefficients for high severity hectares burned and fraction of high severity hectares burned to total fire hectares. \*  $p$  values < 0.05.

Parameter	Correlation	
	r	p
Westwide		
<i>High Severity Acres</i>	0.84	<0.001*
<i>Proportion High Severity</i>	0.12	<0.001*
Arizona		
<i>High Severity Acres</i>	0.81	<0.001*
<i>Proportion High Severity</i>	0.12	0.0169*
California		
<i>High Severity Acres</i>	0.83	<0.001*
<i>Proportion High Severity</i>	0.21	<0.001*
Colorado		
<i>High Severity Acres</i>	0.93	<0.001*
<i>Proportion High Severity</i>	0.09	0.4343
Idaho		
<i>High Severity Acres</i>	0.93	<0.001*
<i>Proportion High Severity</i>	0.14	0.002*
Montana		
<i>High Severity Acres</i>	0.80	<0.001*
<i>Proportion High Severity</i>	0.07	0.2021
New Mexico		
<i>High Severity Acres</i>	0.84	<0.001*
<i>Proportion High Severity</i>	0.10	0.09242
Nevada		
<i>High Severity Acres</i>	0.94	<0.001*
<i>Proportion High Severity</i>	-0.03	0.802
Oregon		
<i>High Severity Acres</i>	0.93	<0.001*
<i>Proportion High Severity</i>	0.03	0.6609
Utah		
<i>High Severity Acres</i>	0.45	<0.001*
<i>Proportion High Severity</i>	-0.01	0.9469
Washington		
<i>High Severity Acres</i>	0.79	<0.001*
<i>Proportion High Severity</i>	0.12	0.176
Wyoming		
<i>High Severity Acres</i>	0.93	<0.001*
<i>Proportion High Severity</i>	0.13	0.1743

Table 2. Results from trend analysis of total annual high severity hectares burned and annual count of fires with high severity hectares > 200 (*Count*) for the period 1984-2014. \*  $p < 0.05$ . We looked for trends in all forest fires in the western US and for trends in forest fires by state. Standard Error values are in parentheses.

Parameter	Slope	$p$
<b>Westwide</b>		
<i>High Severity Acres</i>	6412 (4586)	0.173
<i>Count Over Threshold</i>	1.11 (0.53)	0.047*
<b>Arizona</b>		
<i>High Severity Acres</i>	-417.7 (720.5)	0.567
<i>Count Over Threshold</i>	0.05 (0.01)	0.309
<b>California</b>		
<i>High Severity Acres</i>	2402 (1352)	0.086
<i>Count Over Threshold</i>	0.12 (0.18)	0.530
<b>Colorado</b>		
<i>High Severity Acres</i>	181.1 (357.6)	0.619
<i>Count Over Threshold</i>	0.07 (0.06)	0.259
<b>Idaho</b>		
<i>High Severity Acres</i>	2591 (1490)	0.093
<i>Count Over Threshold</i>	0.20 (0.14)	0.162
<b>Montana</b>		
<i>High Severity Acres</i>	-349.5 (1315.4)	0.793
<i>Count Over Threshold</i>	-0.22 (0.19)	0.253
<b>New Mexico</b>		
<i>High Severity Acres</i>	471.2 (319.4)	0.152
<i>Count Over Threshold</i>	0.01 (0.06)	0.907
<b>Nevada</b>		
<i>High Severity Acres</i>	-43.24 (241.76)	0.860
<i>Count Over Threshold</i>	0.02 (0.04)	0.723
<b>Oregon</b>		
<i>High Severity Acres</i>	-1129.5 (745.6)	0.141
<i>Count Over Threshold</i>	-0.03 (0.08)	0.740
<b>Utah</b>		
<i>High Severity Acres</i>	412.4 (481.8)	0.403
<i>Count Over Threshold</i>	0.16 (0.14)	0.248
<b>Washington</b>		
<i>High Severity Acres</i>	117.7 (412.4)	0.778
<i>Count Over Threshold</i>	-0.02 (0.05)	0.743
<b>Wyoming</b>		
<i>High Severity Acres</i>	-347.7 (4356.7)	0.933
<i>Count Over Threshold</i>	0.24 (0.10)	0.039*



Table 3. Results from trend analysis of total annual high severity hectares burned and annual count of fires with high severity hectares > 200 (*Count*) for the period 1984-2014. \* $p < 0.05$ . We looked for trends in all forest fires in the western US and for trends in forest fires by modeled sub-region. Standard Error values are in parentheses.

	Slope	$p$
<b>Westwide</b>		
<i>High Severity Acres</i>	6412 (4586)	0.173
<i>Count Over Threshold</i>	1.11 (0.53)	0.047*
<b>Northern Rocky Mountains</b>		
<i>High Severity Acres</i>	53.18 (3408.92)	0.988
<i>Count Over Threshold</i>	0.44 (0.30)	0.150
<b>Sierra Nevada Mountains</b>		
<i>High Severity Acres</i>	205.3 (411.1)	0.621
<i>Count Over Threshold</i>	0.07 (0.06)	0.280
<b>Southwest</b>		
<i>High Severity Acres</i>	-111.0 (930.6)	0.906
<i>Count Over Threshold</i>	-0.05 (0.10)	0.649

Table 4. The final predictor variables for the logistic regression (presence/absence) and generalized Pareto distribution (GPD) models for the western US and three sub-regions.

Variable Description	Westwide logistic regression	Westwide GPD	NR logistic regression	NR GPD	SW logistic regression	SW GPD	SN logistic regression	SN GPD
Elevation								
Minimum			✓	✓				
Maximum					✓	✓		
Mean			✓	✓				
Slope							✓	✓
1961-1990:								
Cumulative water year moisture deficit, standard deviation								✓
Cumulative water year evapotranspiration, mean					✓			
Average temperature, mean	✓		✓	✓				
Average temperature, std devn.	✓						✓	✓
Month of Fire:								
Maximum temperature	✓	✓		✓			✓	✓
Average spring temperature				✓		✓	✓	✓
Average relative humidity				✓		✓		
March snow water equivalent				✓				
April snow water equivalent								✓
Moisture deficit June					✓			
Moisture deficit July	✓							
Fraction of PRCC1							✓	✓
Fraction of PRCC2							✓	
Fraction of PRCC3	✓				✓	✓		
Month of fire normalized moisture deficit								
Normalized cumulative water year moisture deficit	✓	✓	✓	✓	✓	✓		✓
Latitude-longitude spline	✓		✓	✓	✓	✓	✓	

Figures

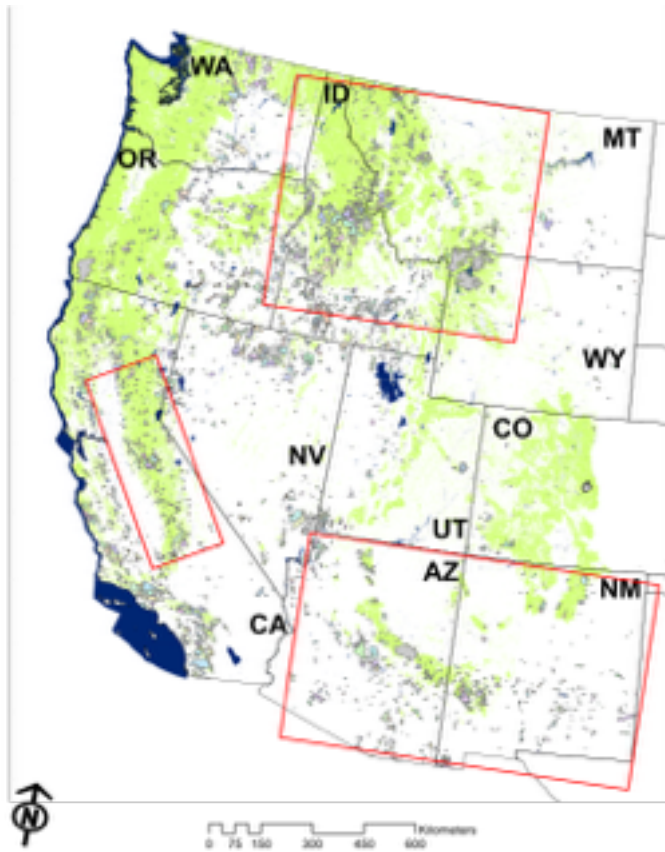


Figure 1. Fire perimeters of large fires 1984-2006. Forested areas are green. Three model development sub-regions are outlined: the Northern Rocky Mountains (MT, ID, WY), the Sierra Nevada Mountains (CA), the Southwest (AZ, NM).

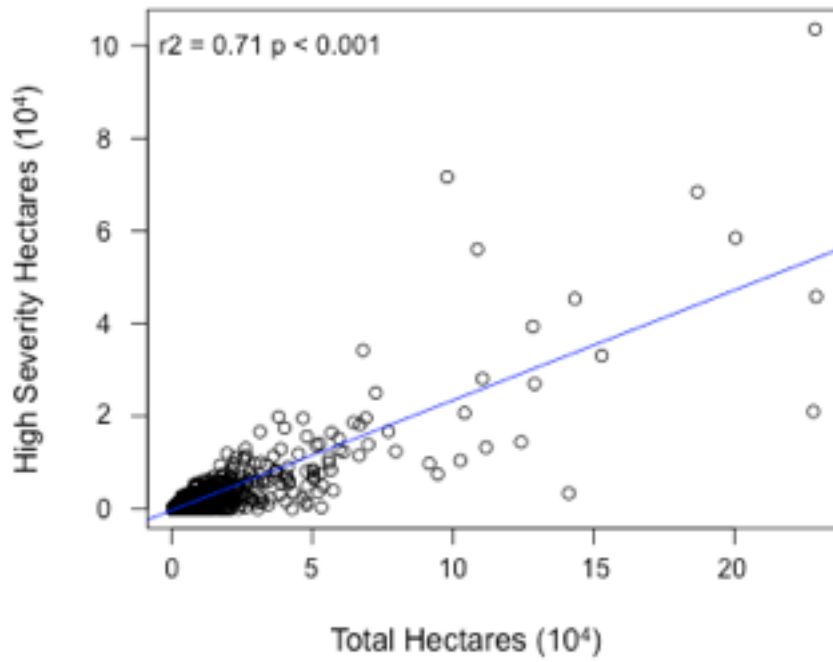


Figure 2. Total area burned vs. high severity area burned for all fires in the western US, 1984-2014. Blue line is linear model fit to the data.

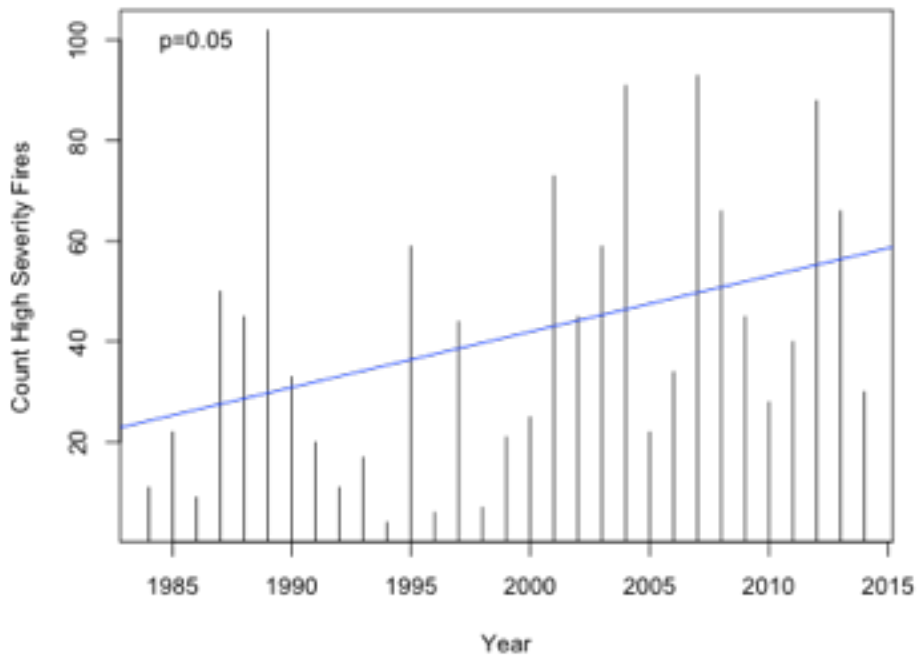


Figure 3. Annual number of fires with high severity area exceeding the 200 hectare threshold for 1984-2014 for all fires in the western US. The blue line is a fit of the statistically significant trend in number of high severity fires.



Figure 4. Frequency of fires above and below our 200 hectare threshold for each state. Green bars are the annual number of large fires with no presence of high severity fire; purple bars are the annual number of large fires classified as high severity, i.e. high severity hectares exceeding the 200 hectare threshold.

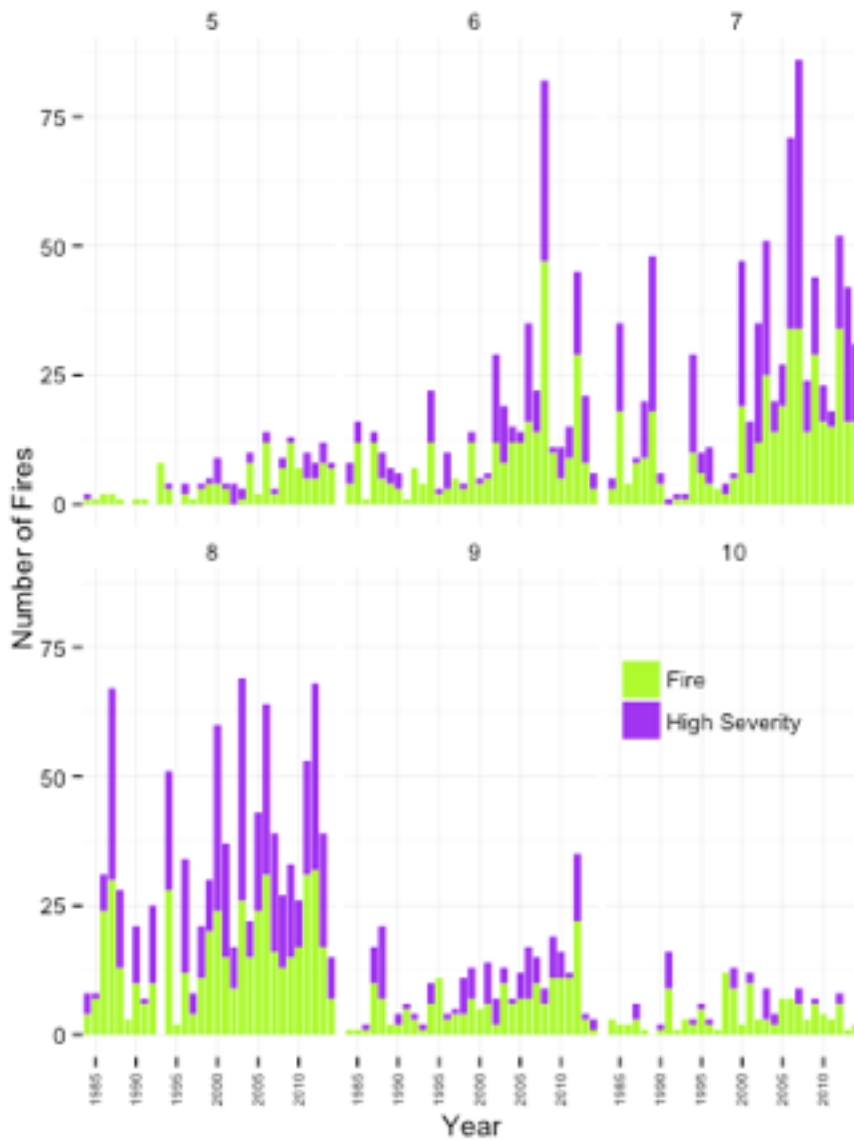


Figure 5 Frequency of fires by severity class for May (5) – October (10). Green bars are the annual number of large fires with no presence of high severity fire; purple bars are the annual number of fires classified as high severity, with high severity hectares > 200 hectare threshold. June, July, and August all experienced statistically significant increases in number of high severity fires from 1984-2014 ( $p = 0.015$ ,  $p=0.043$ ,  $p=0.057$ , respectively).

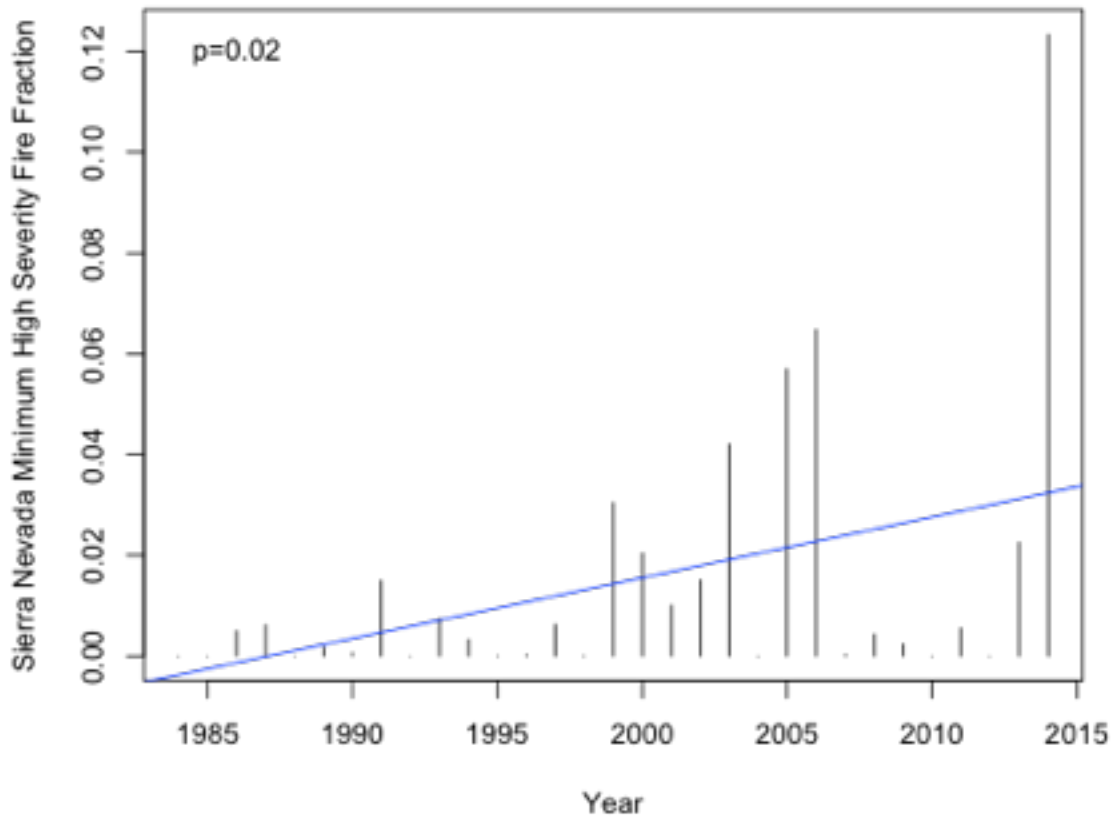


Figure 6. Sierra Nevada annual minimum high severity fraction for years 1984-2014 with trend line in blue.



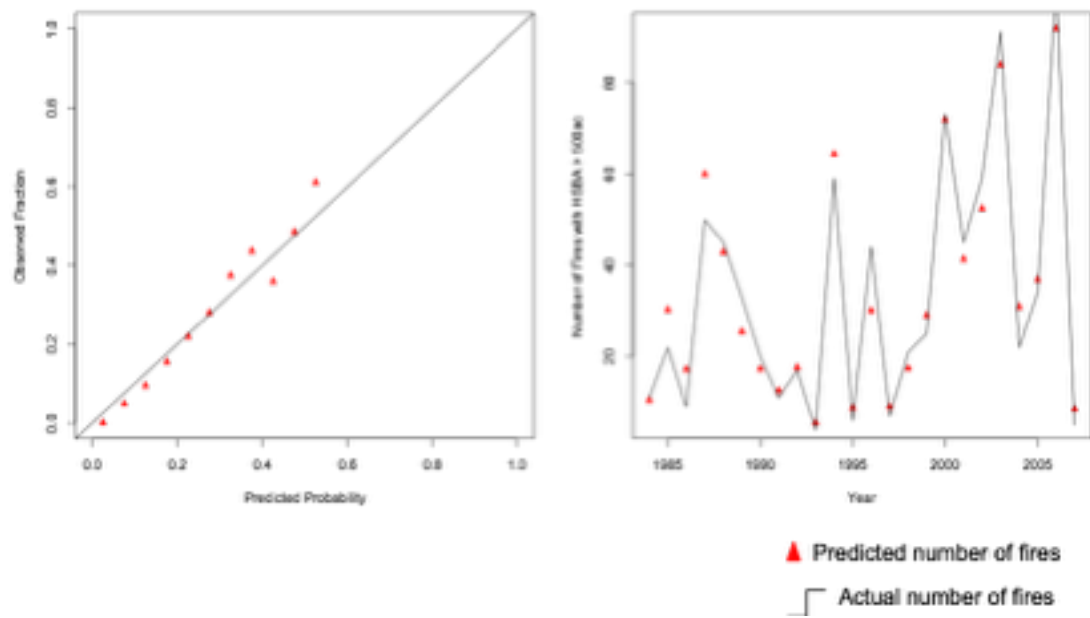


Figure 7. a) Probability of occurrence of high severity fire >200 hectares vs. observed fraction from logistic regression analysis for the Western US. b) Predicted vs. observed annual number of fires meeting threshold of 200 hectares.

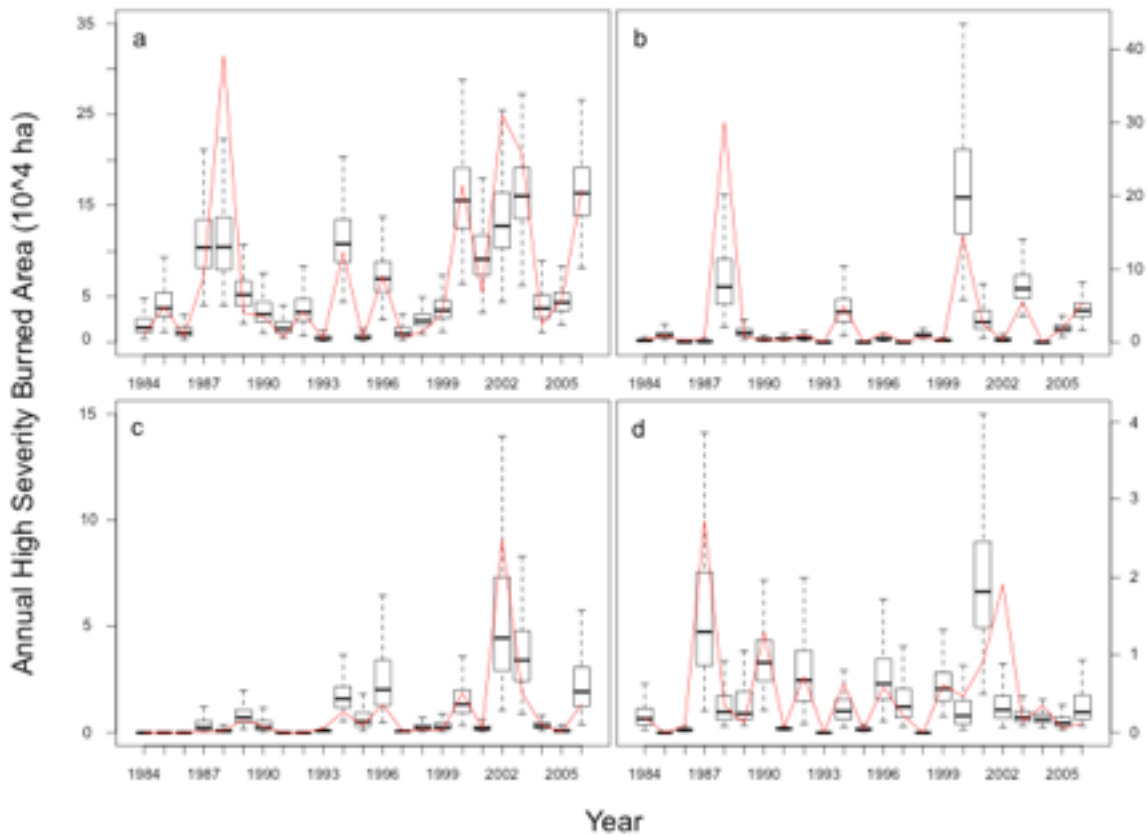


Figure 8. Observed high severity hectares burned (line) versus 1000 simulations generated with a generalized Pareto Distribution with covariates for a) the Western United States, b) the Northern Rocky Mountains, c) the US Southwest, d) the Sierra Nevada Mountains. Developing regional models improved predictions for years with regionally specific high severity fire occurrence: 1988 and 2000 for the Northern Rocky Mountains, 2002 for the Southwest, and 1987 for the Sierra Nevada.

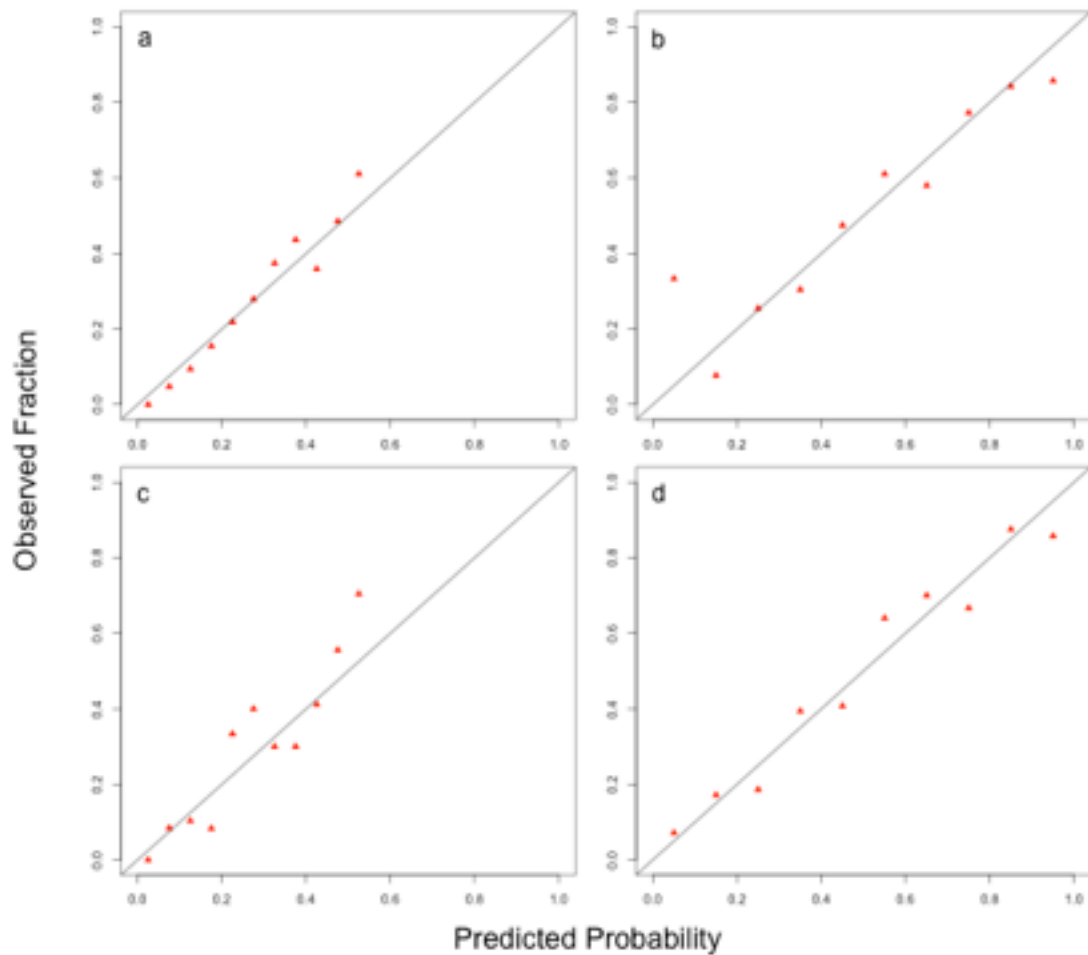


Figure 9. From logistic regression, the predicted probability vs. observed fraction of high severity fire burned area > 200 hectare for a) Western US b) Northern Rocky Mountains c) Southwest d) Sierra Nevada Mountains